

# 2023 QUICK ID GUIDE

## Invasives Strike Force Survey

During this year's Invasive Strike Force Surveyor program, we will be monitoring five (5) emerging invasives in our region. With your help as citizen scientists, we can take steps to help manage and potentially eradicate these harmful species.



LOWER  
HUDSON  
PRISM

### For questions/more info...

Contact [invasives@nynjtc.org](mailto:invasives@nynjtc.org)

Visit [lhprism.org](http://lhprism.org)

Follow [facebook.com/lhprism](https://facebook.com/lhprism)

### Tree of heaven (Ailanthus)

- Large compound leaves composed of many paired leaflets oppositely arranged on leaf stalk
- Leaflets have a notch at base with gland
- Smooth bark – cantaloupe rind!
- Crushed leaf smells like rancid peanut butter



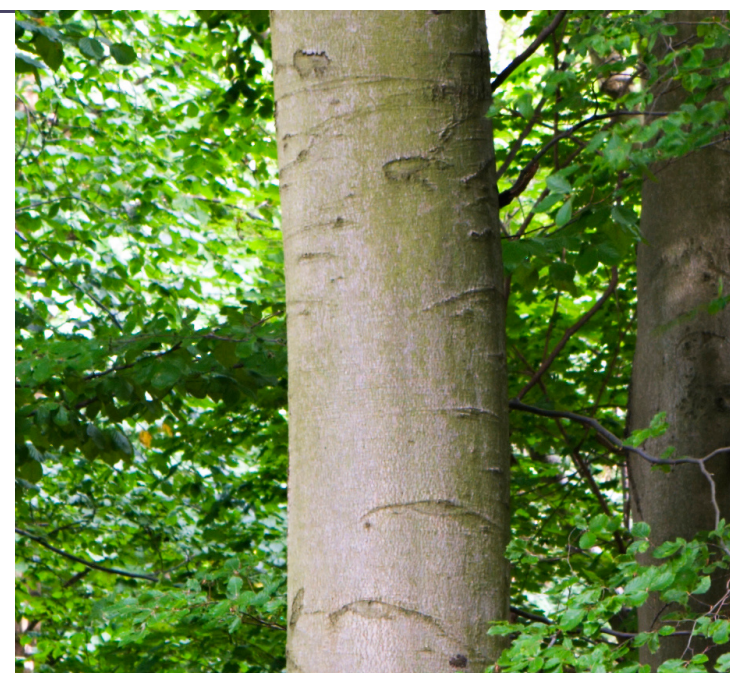
### Spotted lanternfly (SLF)

- Early immature stages (May-July) are black with white spots
- Last immature stage (July-Sept), they develop red patches in addition to the black & white
- Adults are 1 inch long and ½ inch wide at rest
- Hind wings have contrasting patches of red and black with a white band



### Beech leaf disease (BLD)

- Dark-green striped bands between leaf veins when looking up through canopy
- Advanced symptoms lead to leaf crinkling and leathery leaf texture
- Look for elephant leg bark/smooth grey trunk
- Leaves have “waves” like the beach



### Hemlock woolly adelgid (HWA)

- Hemlock trees:
  - Feathery boughs, tiny pinecones, diamond shape, red-ish to purplish, scaly bark
  - Narrow base with exposed trunk near ground
- HWA:
  - White, woolly masses along stems (especially on underside), 3mm in diameter



### Black swallow-wort

- Green vines that spread voraciously
- Leaves are oval-shaped, green, and waxy and arranged opposite one another, measuring about 3-4 inches long by 2-3 inches wide.
- Purple-black, star-shaped flowers
- Green bean-like seed pods (after flowering)

