

# **BOOT BRUSH STATIONS FOR POUND RIDGE NATURE PRESERVES**

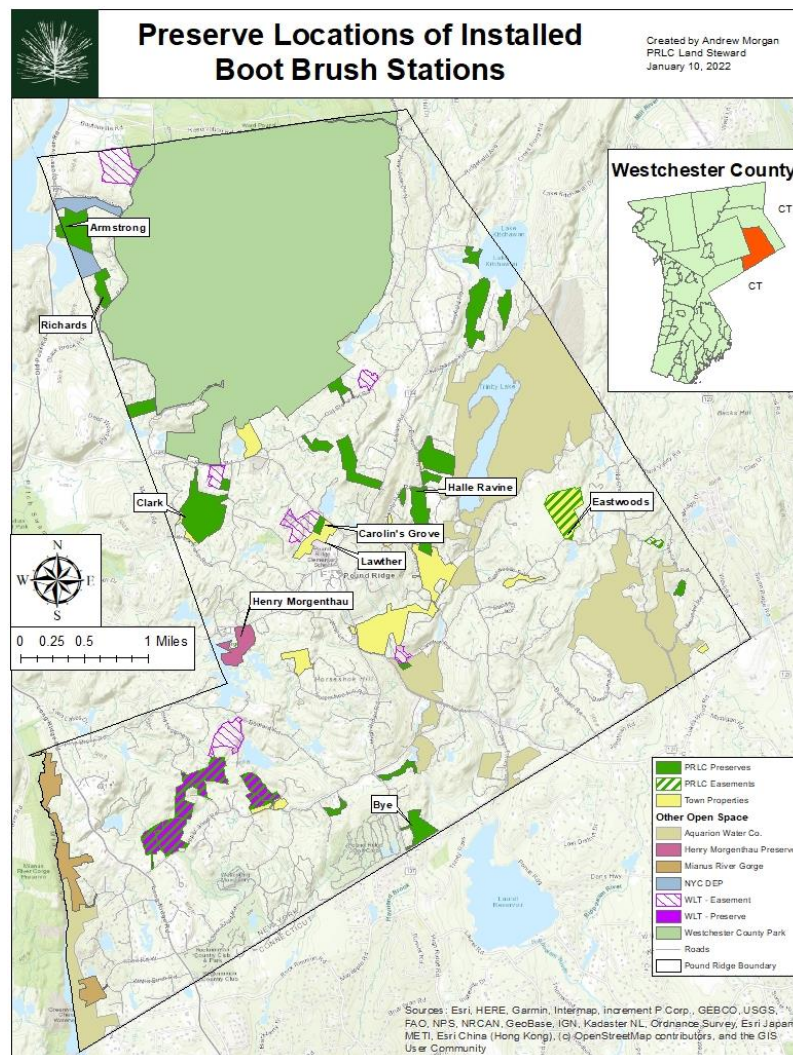
## **FINAL REPORT TO THE LHPRISM**



**Pound Ridge Land Conservancy**  
**January 10, 2022**  
**Andrew Morgan**  
**Land Steward & Program Director**



The Pound Ridge Land Conservancy (project lead), the town's Conservation Board, the Henry Morgenthau Preserve and The Invasives Project - Pound Ridge partnered in 2021 to design and install boot brush stations at nine Pound Ridge nature preserves (see figure 1): six PRLC preserves – Armstrong, Bye, Carolin's Grove, Clark, Halle Ravine and Richards; Henry Morgenthau Preserve; and two town owned preserves – Eastwoods and Lawther. This project was contracted by the Lower Hudson Partnership for Regional Invasive Species Management using funds from the Environmental Protection Fund as administered by the New York State Department of Environmental Conservation.



**Figure 1.** Map of Station Locations in Pound Ridge.

Each station has a boot brush for hikers to use before and after entering the trails to help prevent the spread of invasive species to and from the preserves (LHPRISM 2021 Goal 5. Objective F). They also serve as an awareness tool with each station installed with an educational sign designed by our team (see figure 2). These signs host a QR code directing visitors to the LHPRISM's website as the region's "go-to organization for reliable and current information on regional invasive species" (Goal 1.A). The signs also

promote PlayCleanGo (Goals 5.F.2 & 5.F.3) and encouragement to avoid transporting pests like beech leaf disease (Goals 5.C.2 & 5.C.4).



**Figure 2.** Educational Sign for Boot Brush Stations

The first five station installations were timed in conjunction with NYS ISAW in June and our other related events occurring that week. These installs were promoted on our social media outlets and in our local newspaper (see figure 3). Three additional stations were built over the course of the summer by PRLC's Land Steward and summer interns, whose stipends were partially supported by this grant. The last station was installed in November at the town's Lawther Preserve. The entire project included 1 PRLC staff, 9 volunteers, 3 high school unpaid interns, and 2 paid summer interns, plus 3 others from collaborating organizations who promoted and worked on sign design.



**Figure 3.** Snip-it of Record Review Article about the Project.



In addition to the newspaper article mentioned, our outreach for this project included two Zoom events totaling 70 live participants with numerous others viewing the recordings, social media posts reaching over 500 people, two community table events, and direct emails to our organizations' listservs. Installation instructions were created and submitted to the LHPRISM's boot brush working group and a final presentation was made at the November 30<sup>th</sup> all partner meeting.

On behalf of all our project partners, the PRLC expresses our gratitude to the LHPRISM and the NYS DEC for these funds that allowed us to install so many boot brush stations on our preserves in one season. Due to the grant funds we had the ability to purchase materials in bulk and along with our in-house designs, we were able to install these stations for only \$143 in materials per station! Much thanks also go to our wonderful volunteers who turned out for our work session to install four stations, at four different locations at the same time. Our stations have already been well used as evidenced by the piles of dirt below the brush and plants sprouting from these piles. Pictures of our stations installed in 2021 can be seen below.

For questions concerning this project, please contact Andrew Morgan, PRLC Land Steward & Program Director at [landsteward@prlc.net](mailto:landsteward@prlc.net).



The Armstrong Preserve station was installed by high school interns and staff on May 27<sup>th</sup>.



The Halle Ravine Station being installed by volunteers during the June 5<sup>th</sup> work session.





The Clark Preserve Station being installed by staff and volunteers during the June 5<sup>th</sup> work session



The Henry Morgenthau Station being installed by volunteers during the June 5<sup>th</sup> work session



The Eastwoods Preserve station was installed by volunteers during the June 5<sup>th</sup> work session. All brushes have been in use as evidenced by dirt accumulation and plants sprouting below brushes.



The Bye Preserve station was installed by staff and interns on June 22<sup>nd</sup>





The Carolin's Grove station being installed by interns and staff on June 22<sup>nd</sup>.



The Richards Preserve station was installed by staff and interns on July 6<sup>th</sup>.



The Lawther Preserve station was installed by staff and volunteers on November 21<sup>st</sup>.