

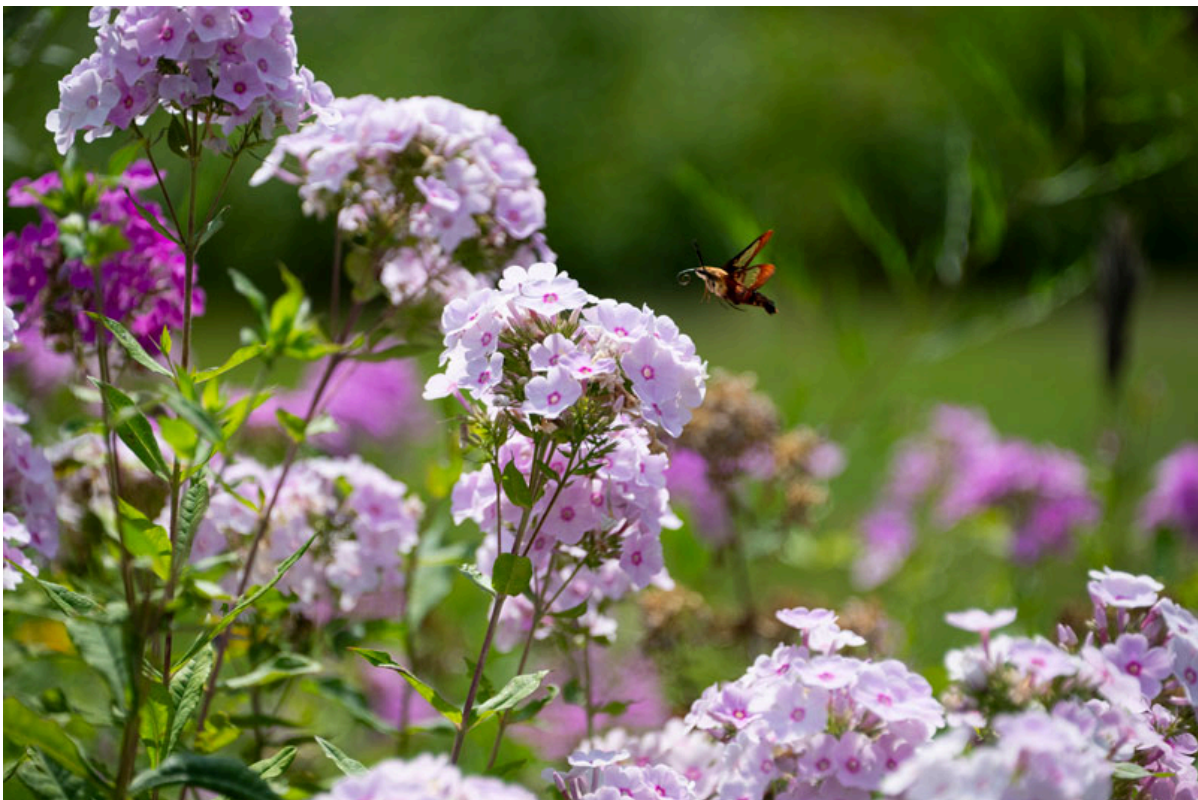


**INVASIVE SPECIES  
MANAGEMENT**  
LOWER HUDSON

*[View in browser](#)*

*Lower Hudson Partnership for Regional Invasive Species Management (LH PRISM) is hosted by the New York-New Jersey Trail Conference and is dedicated to protecting the Lower Hudson region's biodiversity and ecosystems with a focus on controlling the harmful impacts of invasive species.*

## **Stewardship Newsletter | August**



**In this Newsletter:**

- **Lower Hudson PRISM Partner Meeting**
- **Spotted Lanternfly Updates and Resources**
- **Volunteer Spotlight**
- **Upcoming Events**

## Lower Hudson PRISM Partner Meeting



What an incredible turnout at July's Lower Hudson PRISM partner meeting, breaking an attendance record with **115 attendees!**

We kicked off the meeting with knotweed management successes and lessons learned from our partners and participants at Marist College, Scenic Hudson, Black Rock Forest, New York Botanical Garden, and Manitoga.

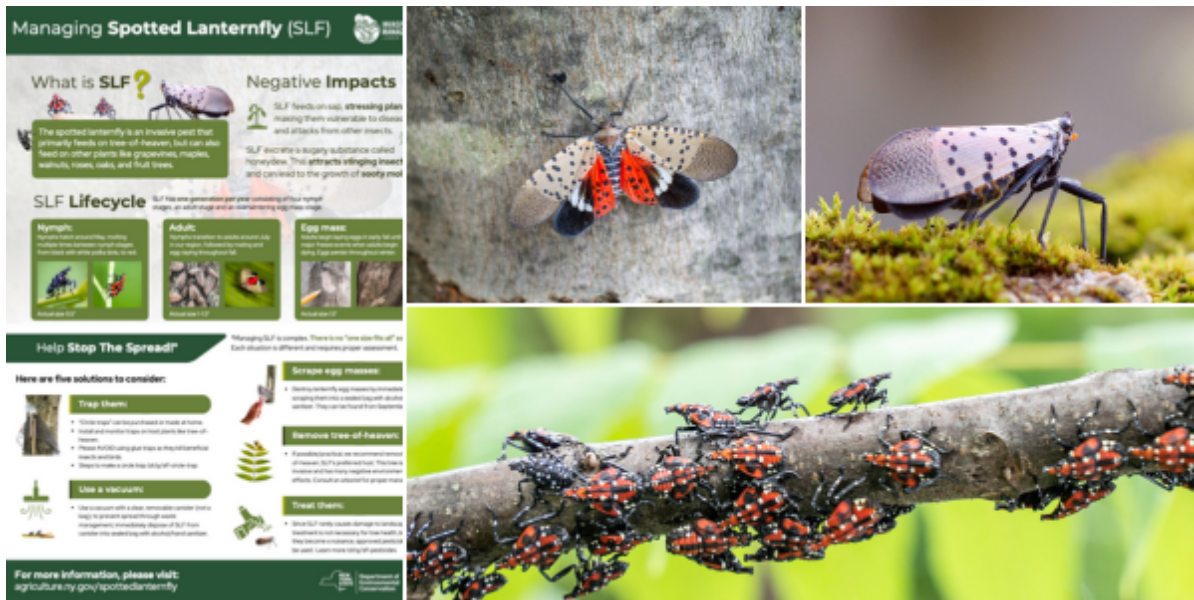
Then, we moved into the field for demonstrations including the **weed torch method** from Mianus River Gorge ([learn more here](#)), best management practices for removing a variety of invasive plants from our own Invasives Strike Force Crew, plug planting with a bulb auger with Wild Woods Restoration Project, and spotted lanternfly trap setup with Lower Hudson PRISM staff.

Afterward, we returned indoors to hear more management tips and techniques and updates from Lower Hudson PRISM Land Management, Monitoring and Restoration Interns from Hudson Highlands Land Trust, Louis Calder Center, Vassar College, and the Fresh Air Fund.

We closed out this jam-packed event with a career panel discussion where PRISM partner representatives, including partners from Mianus River Gorge, Wild Woods Restoration Project, Mohonk Preserve, SUNY Purchase, and NYC Department of Environmental Protection, provided perspective on their career paths and advice for other professionals in attendance looking to break into the environmental field.

Thank you to everyone who braved the heat with us to make this meeting such a success, and to Three Arrows Cooperative for hosting!

## Spotted Lanternfly Updates & Resources



[SLF Guide - Digital file](#)

[SLF Guide - Printable](#)

Spotted lanternfly continues to receive a lot of public and media attention as this invasive insect [spreads throughout New York State](#) and poses challenges to recreational and natural areas, private property, and business owners. Even though spotted lanternfly is here to stay and there is no one-size-fits-all solution to mitigating their impacts, being well-informed about options for management is key to developing a response that is appropriate to the scale of the infestation.

We have created a helpful "one-pager" for those seeking useful information on spotted lanternflies. **This quick guide offers practical information on identification, lifecycle, impacts, and management tips and techniques.**

This guide can be printed and placed in public spaces or shared digitally. We have provided both options above for anyone interested in spreading this resource with their communities. In addition to these educational resources, LH PRISM is also working together as a partnership to collect and report data to NYS Department of Agriculture and Markets. We have deployed 120 SLF circle traps throughout the Lower Hudson Valley to help

us better understand the rate and mechanism of spread of SLF in our region. This data will be used to help inform and refine long-term management solutions.

## Volunteer Spotlight



### Say hello to Annalise!

Annalise has volunteered for the Trail Conference since 2018, primarily as an **Invasives Strike Force (ISF) Surveyor**. As an ISF Surveyor, she has helped monitor the health of our forests while documenting invasive and native species along our trails. **She loves that this program allows her to explore new areas while learning more about what she observes while hiking.**

Annalise was excited to begin this season surveying at Harriman State Park where she spotted invasive Japanese barberry, identifiable by its small, oval-shaped green leaves, a reddish-brown stem, and, of course, its thorns. When observations like these are loaded into a mapping database by our Surveyors, the **data is used to improve monitoring and management of invasive species along our trails, helping protect the land we love.**

We'd love to have you join our ISF Surveyor volunteer program! Learn more and sign up below.

[Become a volunteer!](#)

## Upcoming Events



### Join the Habitat Helpers

Come help us care for the native plant landscape at the Trail Conference headquarters!

Join volunteers from the Bergen - Passaic chapter of the Native Plant Society of New Jersey to care for the native plant habitat at the Trail Conference headquarters. We learn about native plants and care for the habitat by weeding, planting, pruning and mulching.

**Tuesday, August 6th, 9:00 am**

[Register](#)

**Sunday, August 11th, 10:00 am**

[Register](#)

**Sunday, August 18th, 9:00 am**

[Read more](#)

**Sunday, August 25th, 10:00 am**

[Read more](#)

### Forest Vitals | Learn How to Monitor the Health of Our Woods

**Thursday, August 22nd**  
9:30 - 11:30 am  
Clearpool Model Forest, Carmel, NY

Speakers: Jessica Alba & Tyler Van Fleet of the [Watershed Agricultural Council](#)

Forests clean the air we breathe, filter the water we drink, and provide habitat for native species. They are an important resource to both our ecosystems and our wellbeing that rely on our active stewardship.



Join us as we explore Clearpool Model Forest to learn how to spot the signs of a healthy woodland habitat. On this approximately 1.5 mile guided walk, Watershed Agricultural Council staff will share resources, techniques, and tools you can use to assess and address the health of your woods. Topics will include forest regeneration, invasive species, native plant diversity, and more!

[Register](#)

### **Invasive Species Removal Workday | Protecting Native Habitat**

**Wednesday, August 21  
9:00 am-12:00 pm  
Pyramid Mountain, Montville, NJ**

Do you enjoy birds, butterflies, and wildflowers? Would you like to help protect them? Come help us remove invasive plants from this beautiful park!

Anyone can participate. No experience is necessary; we provide on-the-job training.

You will need to bring leather work gloves and plenty of water. We provide the tools.

[Register](#)



New York - New Jersey Trail Conference  
600 Ramapo Valley Rd Mahwah, NJ 07430

Copyright © New York - New Jersey Trail Conference | [Unsubscribe](#) | [Privacy Policy](#)